

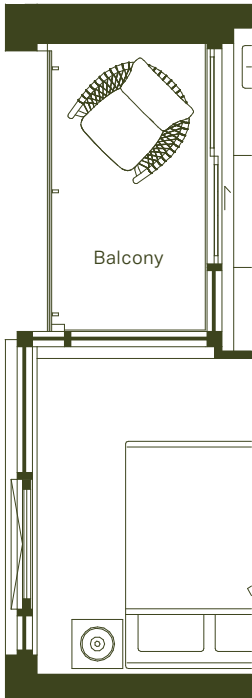
1N+D

Junior 2 Bed + 2 Bath

598 sq. ft.

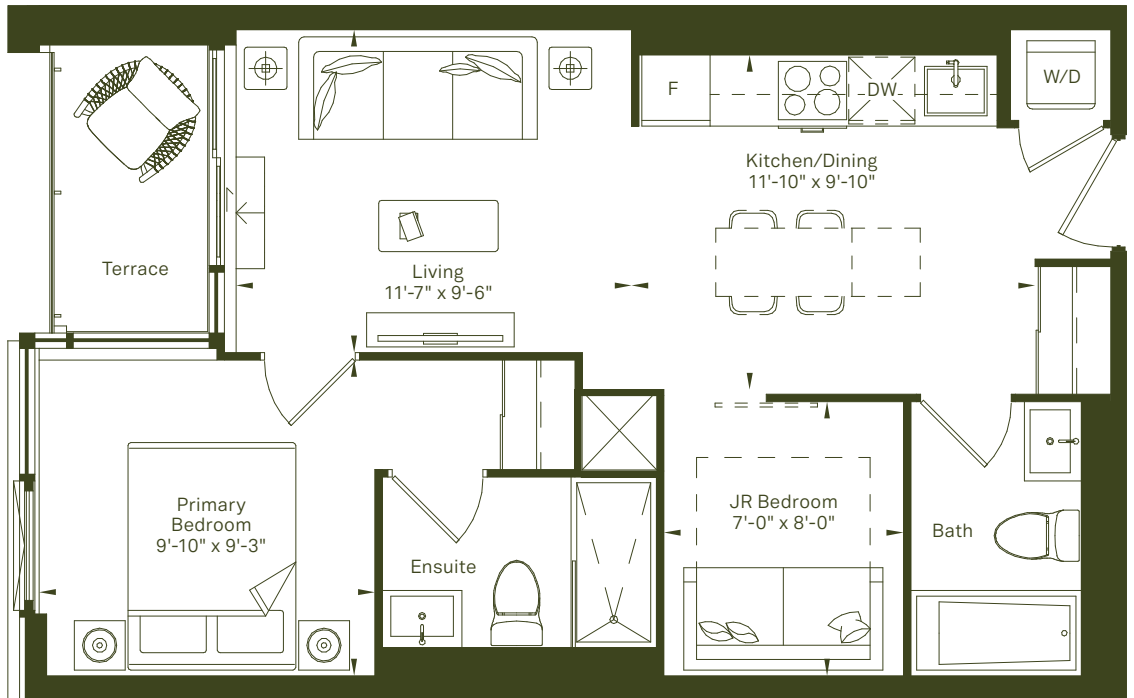
Terrace 47 sq. ft.

ORIGIN



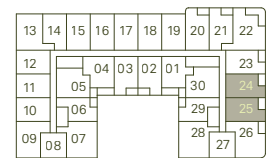
Terrace
(including step)
211, 212

Balcony
225-425
226-426
311-411
312-412
524-624



Terrace
(including step)
210

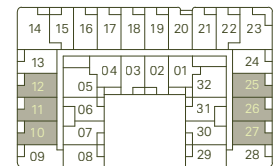
Balcony
227-427
310-410
525-625



Floor 5-6



Floor 2



Floor 3-4

MARLIN
SPRING
DEVELOPMENTS

Greybrook

All rights reserved. Buildings and views not to scale. Some features and finishes herein are upgrades or are for illustrative purposes only and may not be available. Furniture is displayed for illustration purposes only. Layout does not necessarily reflect the electrical plan for the suite. Suites are sold unfurnished. Balcony, terrace and façade variations may apply, contact a sales representative for further details. Illustrations are artist's concept only. Prices and specifications subject to change without notice. E. & O.E. April 2024