

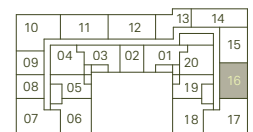
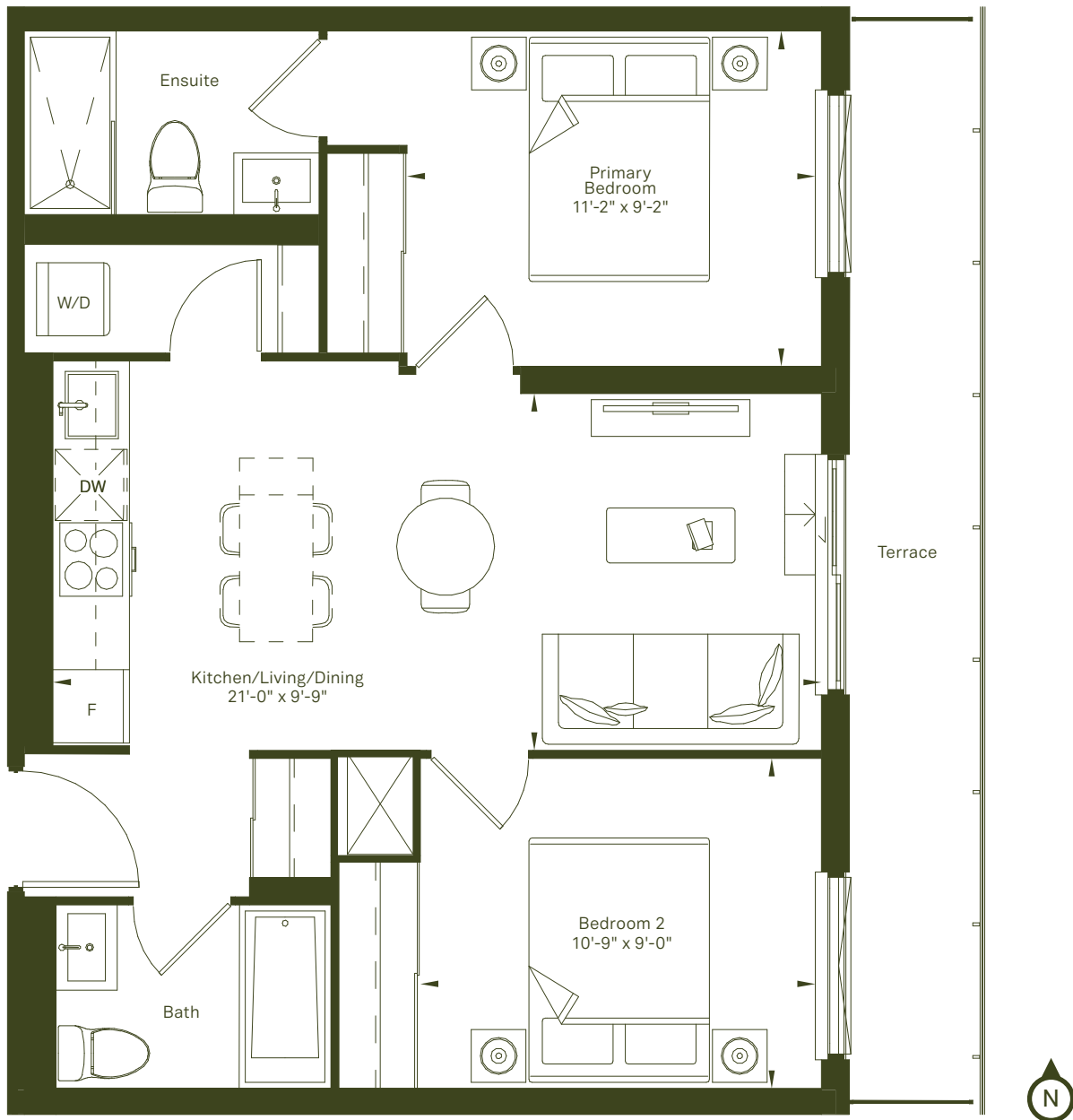
2I-T

2 Bed + 2 Bath

678 sq. ft.

Terrace 145 sq. ft.

ORIGIN



Floor 10

MARLIN
SPRING
DEVELOPMENTS

Greybrook

All rights reserved. Buildings and views not to scale. Some features and finishes herein are upgrades or are for illustrative purposes only and may not be available. Furniture is displayed for illustration purposes only. Layout does not necessarily reflect the electrical plan for the suite. Suites are sold unfurnished. Balcony, terrace and façade variations may apply, contact a sales representative for further details. Illustrations are artist's concept only. Prices and specifications subject to change without notice. E. & O.E. April 2024